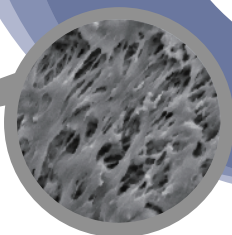
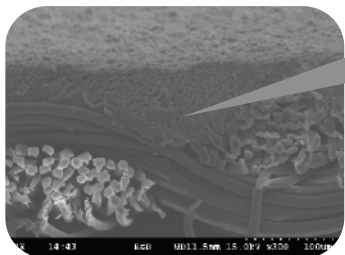




微多孔型

透濕防水塗佈及貼合織物

abletex®



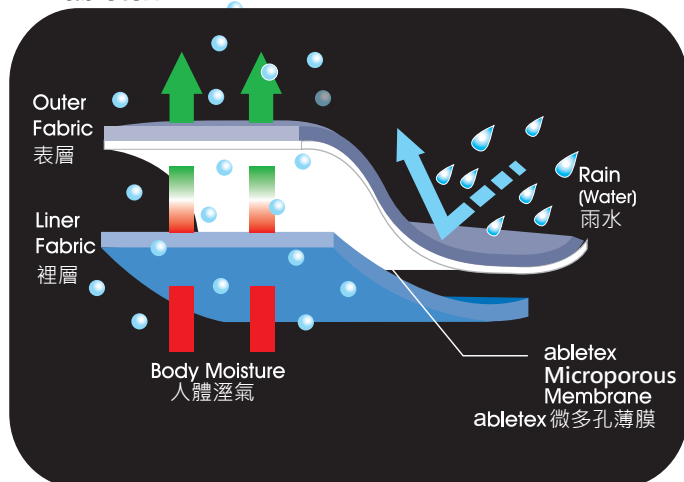
微多孔薄膜
Microporous membrane

掃描式電子顯微鏡(SEM)下之斷面圖
A sectional view under the scanning
electronic microscope(SEM)

abletex® 為高性能透濕防水貼合布料。係採用本公司高科技微多孔型透濕防水PU膜與各種布料作貼合(塗佈)，具有耐久特性，是新世代高性能透濕防水布料。系列產品具有10,000 mmH₂O以上高防水度及10,000g/m²/24hr(JIS L1099-B1法)以上高透濕度之特性。在任何環境天候下，可保持身體乾爽、舒適，是戶外運動、休閒衣料絕佳的選擇。

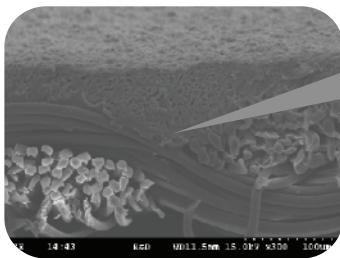
•機能表現示意圖Function Performance

abletex

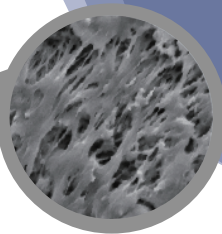


Microporous Membrane Laminated & Coated Fabric

abletex[®]



A sectional view under the scanning electronic microscope(SEM)



Microporous membrane

abletex[®] is a high-performance breathable waterproof fabric. It is made by laminating the hi-tech microporous waterproof PU membrane of our company with various kinds of substrate, which has durable characteristics and it is new-generation high-performance breathable waterproof fabric. This series has more than 10,000mmH₂O of waterproof function and more than 6000 g/m²/24hr (JIS L1099-A1 Method) of breathability. Under any environmental weather, it can keep dry, comfortable body, which is the best choice for the outdoor sports, leisure activities.

•Function Performance

